



Lil' Kim

Charm Pack Pattern



Fabric Requirements

- 40 charm squares 5"
- 1/4 yd for Binding Fabric
- 1/2 yd for Backing Fabric
- 1/2 yd Batting (18" x 42")

Lil' Kim - Runner

Size: 14-1/2" x 35-1/2"

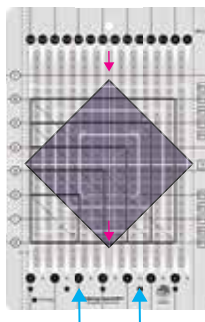
Cutting

•Binding fabric:

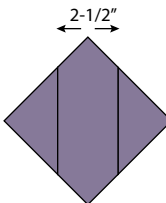
Cut Three 2-1/4" strips for binding.

Assembly

1. Layer two contrasting 5" squares, right sides up, on top of each other on point on your cutting mat. Lay your Stripology Mini ruler on top of the layered squares so that the white center line is centered on the top and bottom corners of the squares (see pink arrows). Make two cuts through the 2" slit and the 4-1/2" slit on the ruler as shown with the blue arrows.



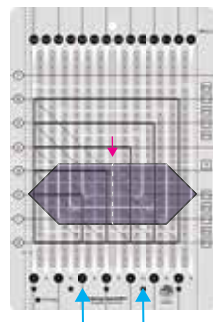
Cutting with regular rulers: With your squares on point on the cutting mat, align the 1-1/4" line on the ruler on the top and bottom corners of the squares and make a cut on the right side. Repeat on the left side so those two cuts are 2-1/2" apart.



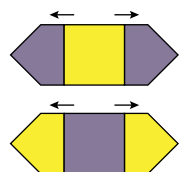
2. Remove the 2 triangles you cut and turn the center pieces 90° as shown. Fold the top unit in half and make a crease through the center as shown with dotted line.



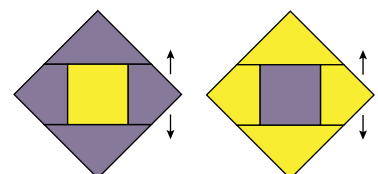
Lay your Stripology Mini ruler on top so that the vertical white center line is lined up with the crease (see pink arrows) and any horizontal line is aligned with the top edge of the unit. Make two cuts through the 2" slit and the 4-1/2" slit on the ruler as shown with the blue arrows.



3. Take the middle unit and switch it to the bottom of the stack. Sew the outer units to the center unit as shown. I prefer sewing one seam, then press and add the other, then press. Always press away from the center. You will get two identical units with the colors mirrored.

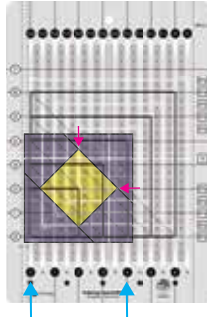


4. Sew the triangle units that match the outside fabric on the sides of the middle units. Press away from the center. Make 40 blocks total.

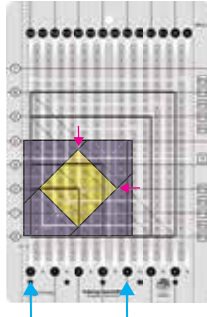


Assembly

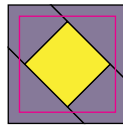
5. Trim your blocks down to 4" as shown. Lay a block on a cutting mat and layer the Stripology Mini ruler on top. Using the 4" black square, layer the ruler so that the square is centered on the block. The vertical 2" slit and horizontal 2" lines should be centered on the four corners of the center square (pink arrows). Make cuts through the 0" and 4" slits.



Rotate the block or mat 90 degrees. Align the black 4" square so that the lines on the top and bottom are aligned with the cut edges of the block and the 2" slit is centered through the center square. Make cuts again through the 0" and the 4" slit. Trim all of your blocks.



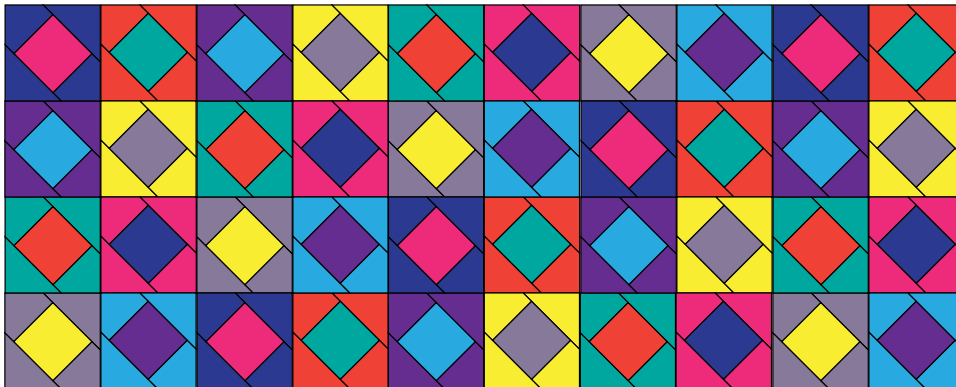
Cutting with regular rulers: Trim the blocks to 4". Make sure that you trim them as centered as possible.



6. Arrange the blocks into ten horizontal rows with 4 blocks each, making sure they are all turned the same way.

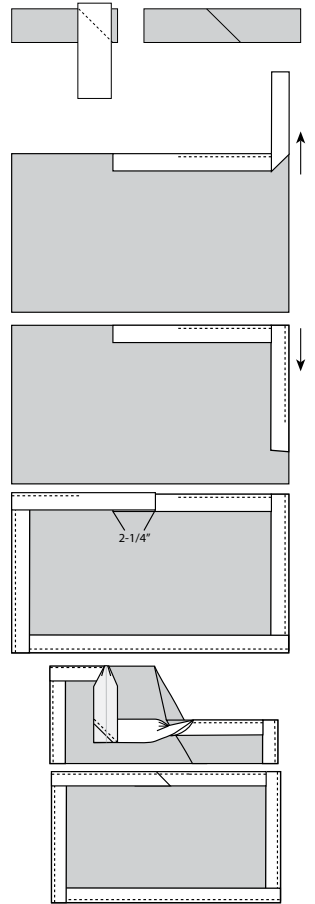
7. Sew the blocks together into rows. Press the seams in row 1 to the right, row 2 to the left and so on. Sew the rows together and press.

8. Layer with backing and batting and quilt as desired.



9. Diagonally piece the binding strips and trim the seam allowance to 1/4". Press seams open. Fold the strip in half lengthwise, wrong sides together and press. With raw edges of the binding and quilt top together, stitch the binding to the quilt starting 8" from the end. Miter the binding at the corners, by folding the binding up and away from the quilt (so raw edges make a straight line) and then fold it down, even with the raw edge of the quilt. Continue sewing binding all the way around, stopping about 8" from the starting point.

Lay the end of the binding over the beginning end and trim so that they overlap 2-1/4". Unfold the ends and bring them together at a 90° angle with right sides together. Sew them diagonally together, trim the seam to a 1/4" and press the seams open, refold the binding and finish sewing it all the way. Fold the binding over the raw edges and to the back of the quilt and hand sew the binding in place.



COPYRIGHT 2020 GE Designs

All rights reserved. No part of this pattern may be photocopied or reproduced in any form. Items made from this pattern are protected by Federal Copyright Law and may not be mass produced for resale.

www.gequiltdesigns.com

gudrun@gequiltdesigns.com Chaska, MN. 952-361-9772