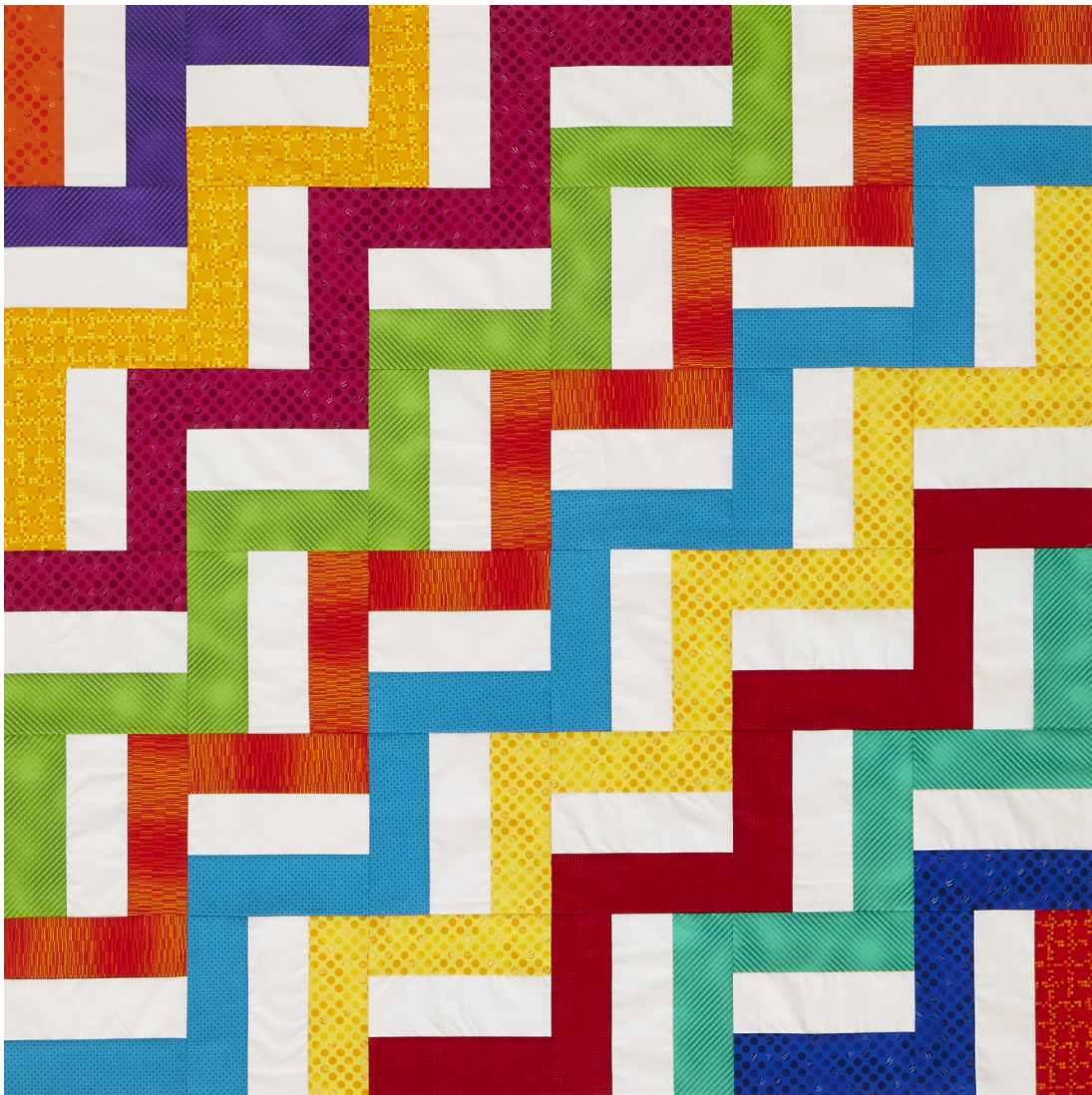
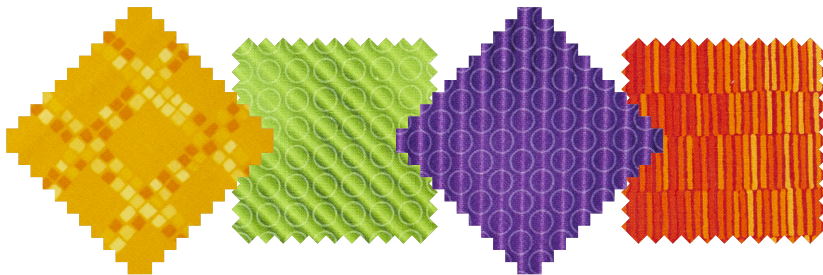


## Project: Colorful Steps

INSPIRED BY *ON THE RAILS* FROM DESIGNER SARAH MAXWELL OF DESIGNS BY SARAH J ([DESIGNSBYSARAHJ.COM](http://DESIGNSBYSARAHJ.COM))  
QUILT TESTER: LAURA BOEHNKE



FABRICS are from the Color Union collection by Studio RK for Robert Kaufman Fabrics ([robertkaufman.com](http://robertkaufman.com)).



Go bright and bold with geometric tone-on-tones and a solid white. These prints create visual movement in the Rail Fence quilt.

## Project: Colorful Steps

### Materials

- 1 yard solid white (blocks)
- ¼ yard each of orange, red, purple, and dark blue tone-on-tones (blocks)
- ⅓ yard each of gold, teal, pink, and dark red tone-on-tones (blocks)
- ½ yard each of green, yellow, dark orange, and blue tone-on-tones (blocks)
- ½ yard binding fabric
- 3½ yards backing fabric
- 63" square batting

Finished quilt: 54½" square

Finished block: 9" square

Yardages and cutting instructions are based on 42" of usable fabric width.

Measurements include ¼" seam allowances. Sew with right sides together unless otherwise stated.

### Cut Fabrics

Cut pieces in the following order.

#### From solid white, cut:

- 36—3½×9½" rectangles

#### From each orange tone-on-tone and red tone-on-tone, cut:

- 1—3½×9½" rectangle

#### From each purple tone-on-tone and dark blue tone-on-tone, cut:

- 3—3½×9½" rectangles

#### From each gold tone-on-tone and teal tone-on-tone, cut:

- 5—3½×9½" rectangles

#### From each pink tone-on-tone and dark red tone-on-tone, cut:

- 7—3½×9½" rectangles

#### From each green tone-on-tone and yellow tone-on-tone, cut:

- 9—3½×9½" rectangles

#### From each dark orange tone-on-tone and blue tone-on-tone, cut:

- 11—3½×9½" rectangles

### From binding fabric, cut:

- 6—2½×42" binding strips

### Assemble Blocks

1. Referring to **Block Diagram**, sew together solid white, orange tone-on-tone, and purple tone-on-tone 3½×9½" strips to make an orange-and-purple Rail Fence block.
2. Repeat Step 1 to make:
  - 2—purple-and-gold blocks
  - 3—gold-and-pink blocks
  - 4—pink-and-green blocks
  - 5—green-and-dark orange blocks
  - 6—dark orange-and-blue blocks
  - 5—blue-and-yellow blocks
  - 4—yellow-and-dark red blocks
  - 3—dark red-and-teal blocks
  - 2—teal-and-dark blue blocks
  - 1—dark blue-and-red block

### Assemble Quilt Top

1. Referring to **Quilt Assembly Diagram**, lay out blocks in six horizontal rows of six blocks each, turning every other block 90°.
2. Join blocks in each row. Press seams in one direction, alternating direction with each row.
3. Sew together rows to complete quilt top. Press seams in one direction.

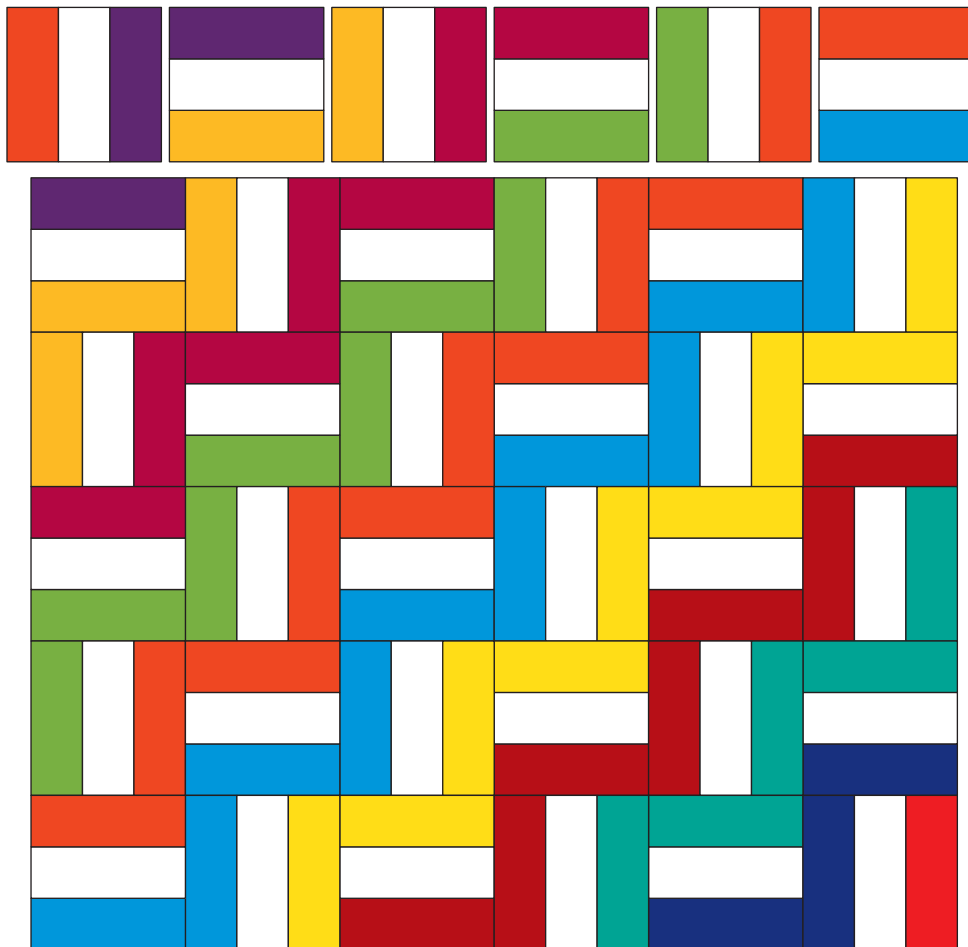
### Finish Quilt

1. Layer quilt top, batting, and backing; baste. Quilt as desired.
2. Bind with binding strips.

Project: Colorful Steps



BLOCK DIAGRAM



QUILT ASSEMBLY DIAGRAM